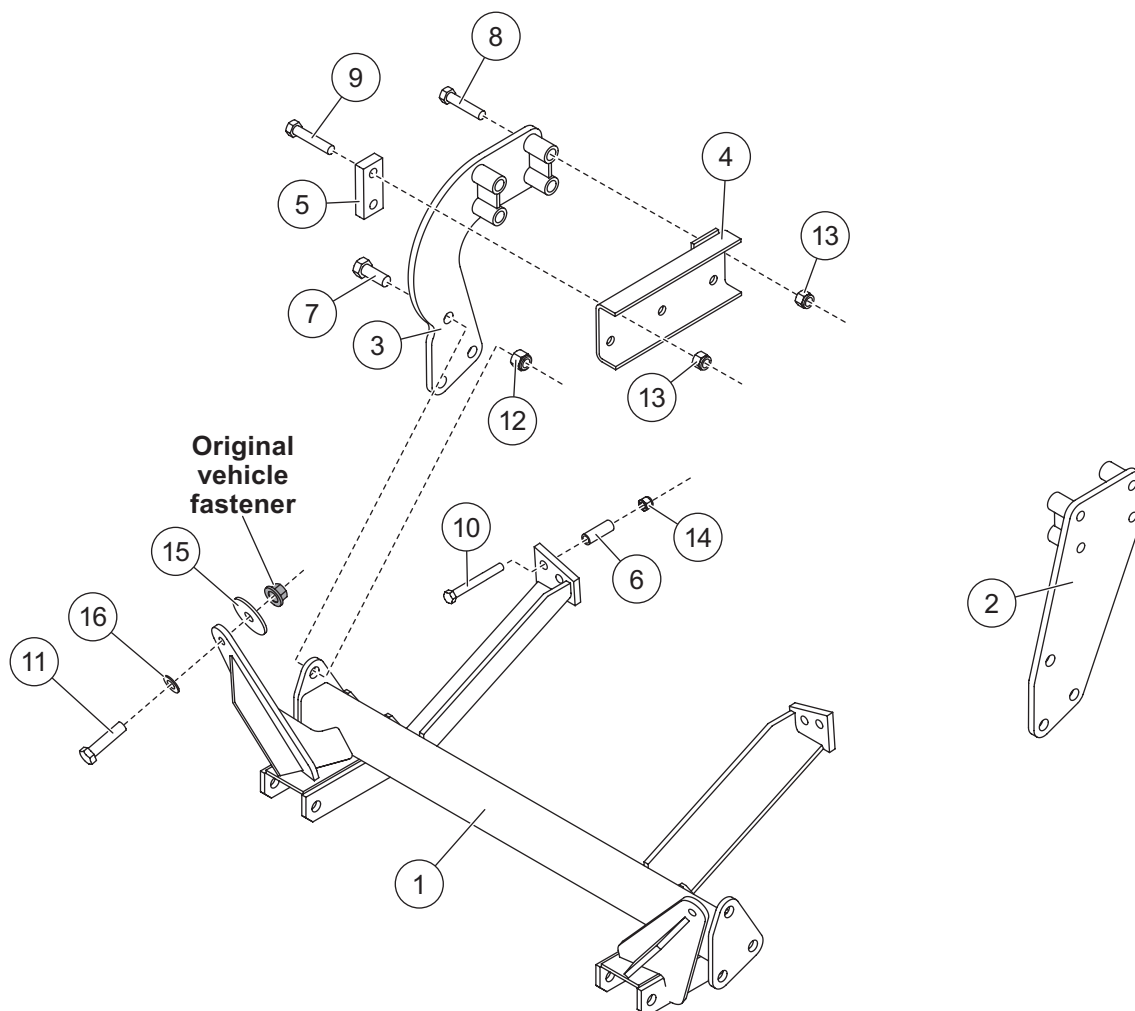


PARTS LIST



33559 Mount Kit							
Item	Part	Qty	Description	Item	Part	Qty	Description
1	26772	1	Mount Cross Bar	4	64109	2	Mount Extension Bracket
2	26793	1	Mount, DS	ns	64113	1	Bolt Bag – 33559
3	26811	1	Mount, PS				
64113 Bolt Bag – 33559							
5		2	Spacer	11		2	M12-1.75 x 50 Hex Cap Screw G10.9
6		4	Frame Spacer	12		6	3/4-10 Hex Locknut GB
7		6	3/4-10 x 2 Hex Cap Screw G5	13		12	5/8-11 Hex Locknut GB
8		8	5/8-11 x 5 Hex Cap Screw	14		4	1/2-13 Hex Locknut GB
9		4	5/8-11 x 3-1/4 Hex Cap Screw G5	15		2	1/2 Polyethylene Flat Washer
10		4	1/2-13 x 4-1/2 Hex Cap Screw G5	16		2	7/16 Flat Washer
ns = not shown			G = Grade		M = Metric		

Copyright © 2014 Douglas Dynamics, LLC. All rights reserved. This material may not be reproduced or copied, in whole or in part, in any printed, mechanical, electronic, film or other distribution and storage media, without the written consent of the company. Authorization to photocopy items for internal or personal use by the company's outlets or snowplow owner is granted.

The company reserves the right under its product improvement policy to change construction or design details and furnish equipment when so altered without reference to illustrations or specifications used. This equipment manufacturer or the vehicle manufacturer may require or recommend optional equipment for snow removal. Do not exceed vehicle ratings with a snowplow. The company offers a limited warranty for all snowplows and accessories. See separately printed page for this important information.

Printed in U.S.A.
