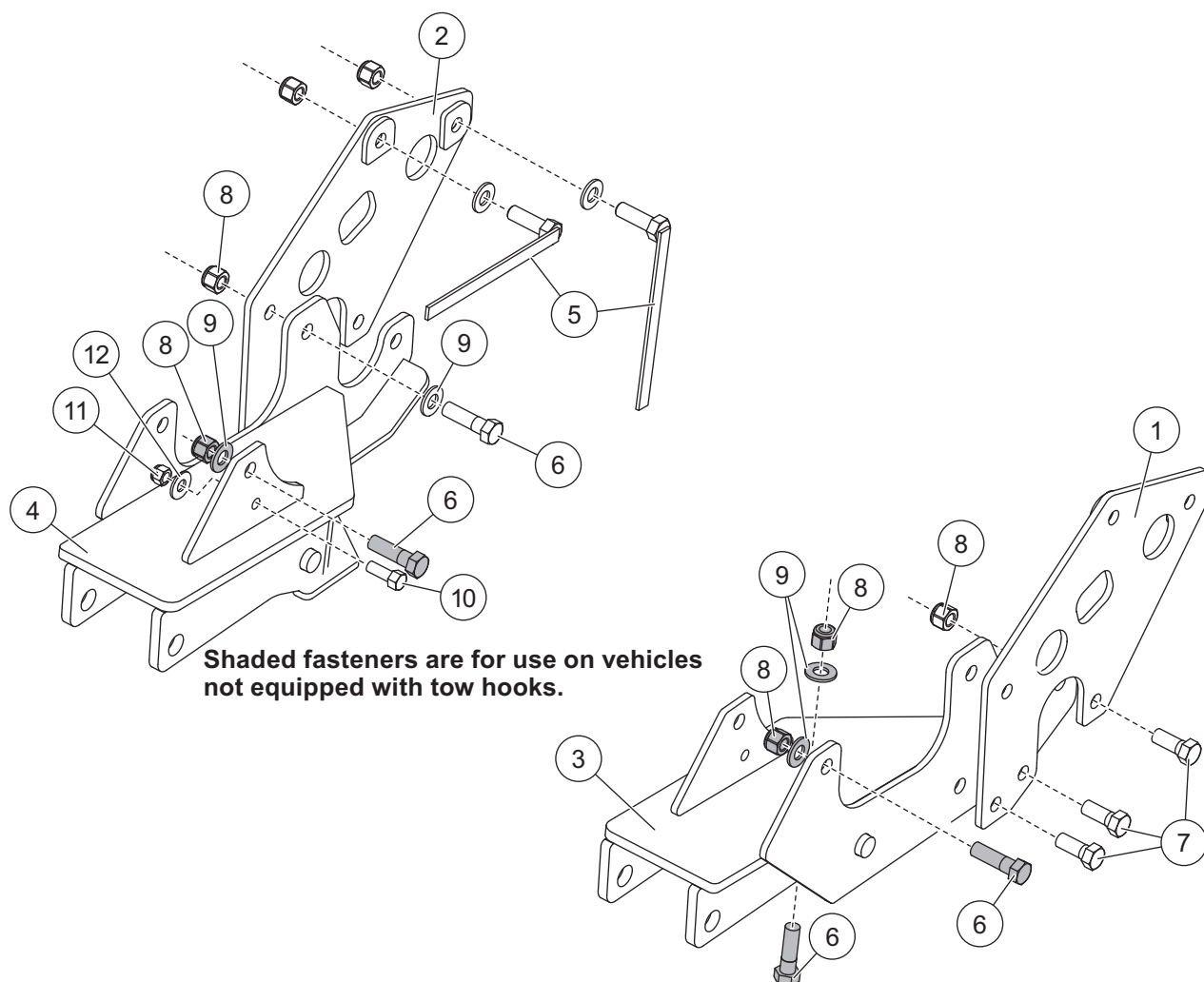


**Mount Kit**  
**GM K2500/2500HD/3500/3600 2011 - \_\_\_**  
**GM C3500/3600 Silv/Sierra 2011 - \_\_\_**

**69981**

November 15, 2014  
 Lit. No. 41515, Rev. 03

**PARTS LIST**



69981 Mount Kit							
Item	Part	Qty	Description	Item	Part	Qty	Description
1	41473	1	Rear Bracket – DS	4	41513	1	Mount – PS
2	41474	1	Rear Bracket – PS	5	21590	4	1/2-13 x 1-1/2 Hex Cap Screw G5
3	41512	1	Mount – DS	ns	41489	1	Bolt Bag – 69981
41489 Bolt Bag – 69981							
6		8	1/2-13 x 1-3/4 Hex Cap Screw G5	10		2	3/8-16 x 1 Hex Cap Screw G5
7		6	1/2-13 x 1-1/4 Hex Cap Screw G5	11		2	3/8 Locknut GB
8		18	1/2-13 Hex Locknut GB	12		2	3/8 Flat Washer
9		14	1/2 Hardened Flat Washer	ns	28445	2	Cable Tie
ns = not shown				G = Grade			

Copyright © 2014 Douglas Dynamics, LLC. All rights reserved. This material may not be reproduced or copied, in whole or in part, in any printed, mechanical, electronic, film or other distribution and storage media, without the written consent of the company. Authorization to photocopy items for internal or personal use by the company's outlets or snowplow owner is granted.

The company reserves the right under its product improvement policy to change construction or design details and furnish equipment when so altered without reference to illustrations or specifications used. This equipment manufacturer or the vehicle manufacturer may require or recommend optional equipment for snow removal. Do not exceed vehicle ratings with a snowplow. The company offers a limited warranty for all snowplows and accessories. See separately printed page for this important information.

**Printed in U.S.A.**

---